



36

TH

**PHUKET KING'S CUP
REGATTA**

30 NOVEMBER TO 6 DECEMBER 2024.

ATTACHMENT 2 - COURSE DIAGRAMS

**Including: Essential information
for Keelboats and Multihulls**



Practice Session: Sunday 1st December

All competitors are invited to participate in a non-scoring practice session to be conducted in the area off Kata Beach.

The Race Committee will set a Start line, Windward and Leeward marks located approximately 1 mile west of Kata Beach.

The Committee will run a series of non-class specific start sequences on a rolling basis with the warning signal displayed every 10 mins between 13:00 and 14:00.

The first warning signal will be at 13.00 hrs.

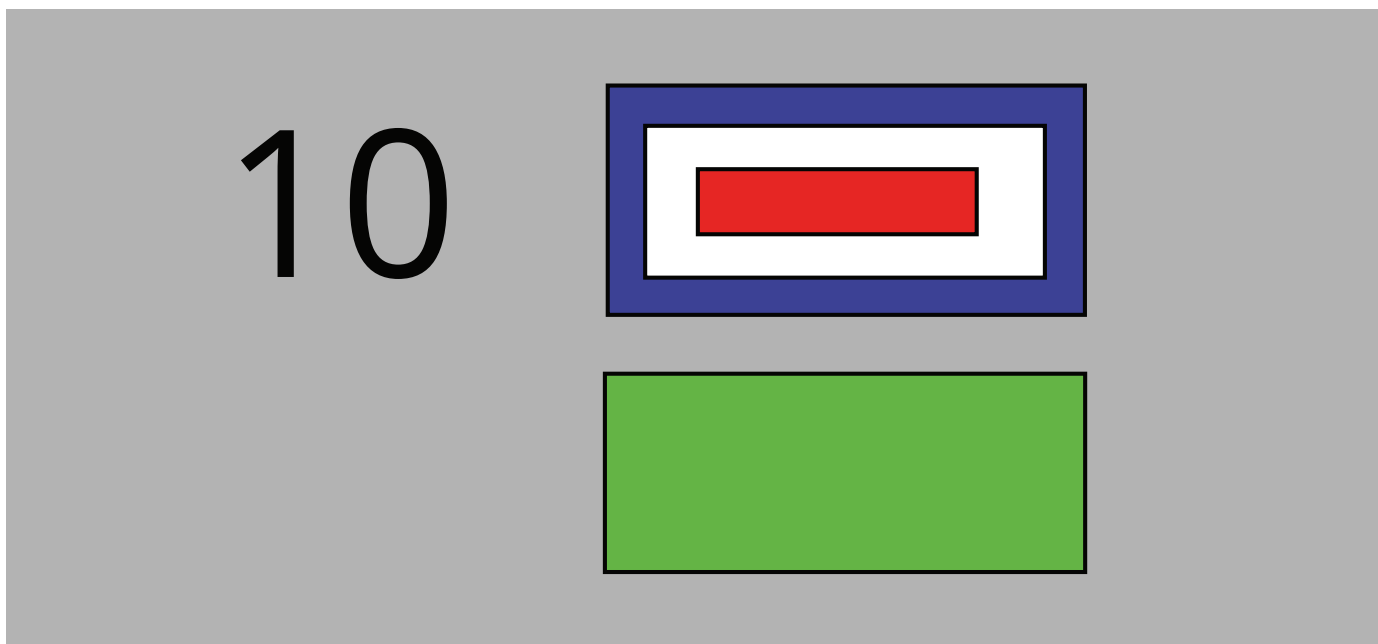
Race Committee

Posted 16:00 26/11/2024

Essential Information

Sailing Instruction 9.7 - Change of direction for rounding of 1st Mark.
Courses (1-18 inclusive and 31 - 43 inclusive)

If Flag W is displayed with the course number board,
The direction of rounding the "FIRST" mark in the course description shall be changed.



The Rounding Direction will be indicated by the Coloured Board displayed below the flag W

If a RED flag is displayed below flag W, then the first mark of the course shall be rounded to PORT

If a GREEN flag is displayed below flag W, then the first mark of the course shall be rounded to STARBOARD

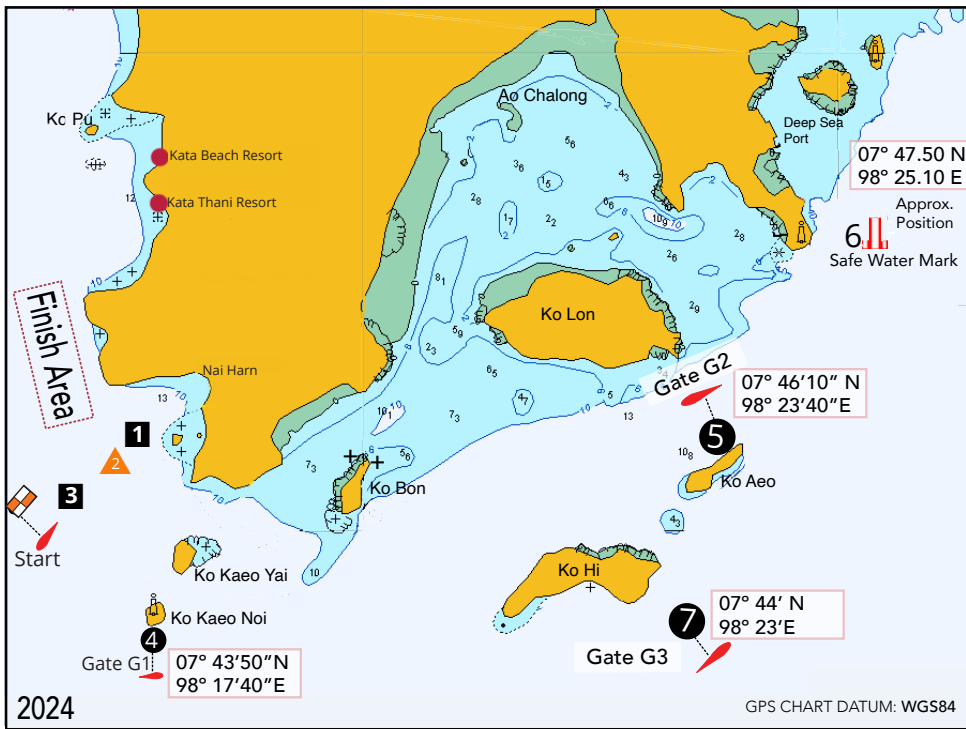
If Flag "W" is not displayed with the course number, the first mark of the course after the start shall be rounded as listed in the course description in attachment 2.

Koh Bon Submerged Rocks

Competitors should be aware of unmarked submerged rocks on the west coast of Koh Bon.

Two recently reported GPS positions are:

07°45.599 N	07°45.520 N
98°19.783 E	98°19.714 E

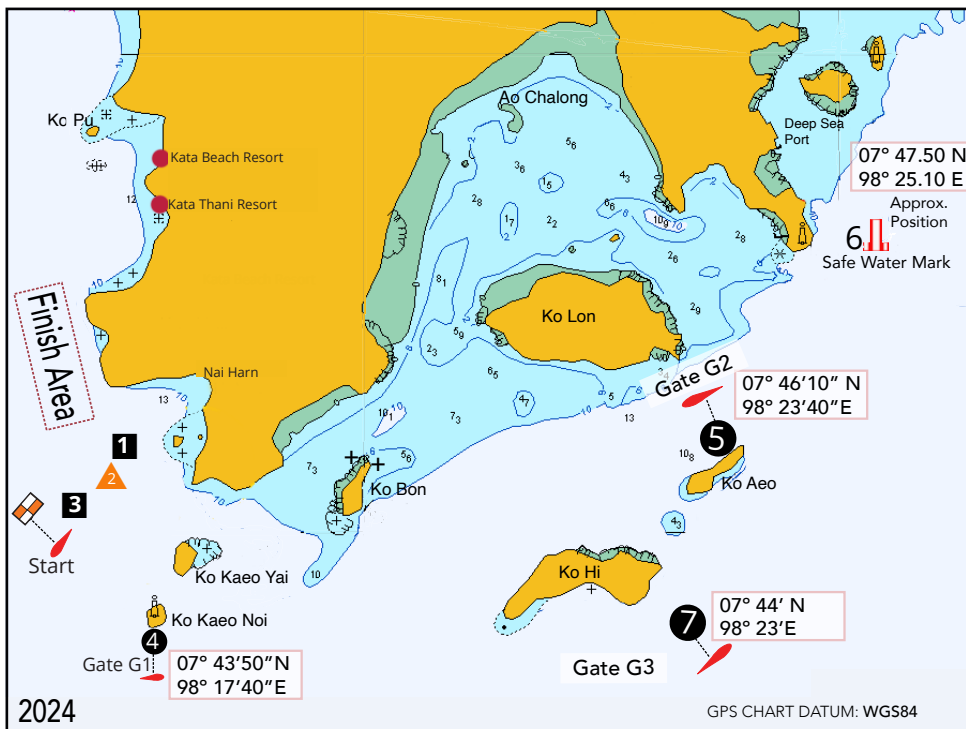


Course 1 (Distance 24 Miles)

Start
 Mark 1 (Black) to Starboard
 Through Gate G1 (Committee Boat to Starboard)
 Pass Ko Hi to Starboard
 Through Gate G2 (Committee Boat to Port)
 Round Ko Aeo to Starboard
 Through Gate G3 (Committee Boat to Port)
 Pass Ko Hi to Starboard
 Through Gate G1 (Committee Boat to Port)
 Finish (Approximate bearing 340 Degrees)

Course 2 (Distance 28 Miles)

Start
 Mark 1 (Black) to Starboard
 Through Gate G1 (Committee Boat to Starboard)
 Pass Ko Hi to Starboard
 Through Gate G2 (Committee Boat to Port)
 Round Safe Water Mark (6) to Starboard
 Pass Ko Aeo to Starboard
 Through Gate G3 (Committee Boat to Port)
 Pass Ko Hi to Starboard
 Through Gate G1 (Committee Boat to Port)
 Finish (Approximate bearing 340 Degrees)

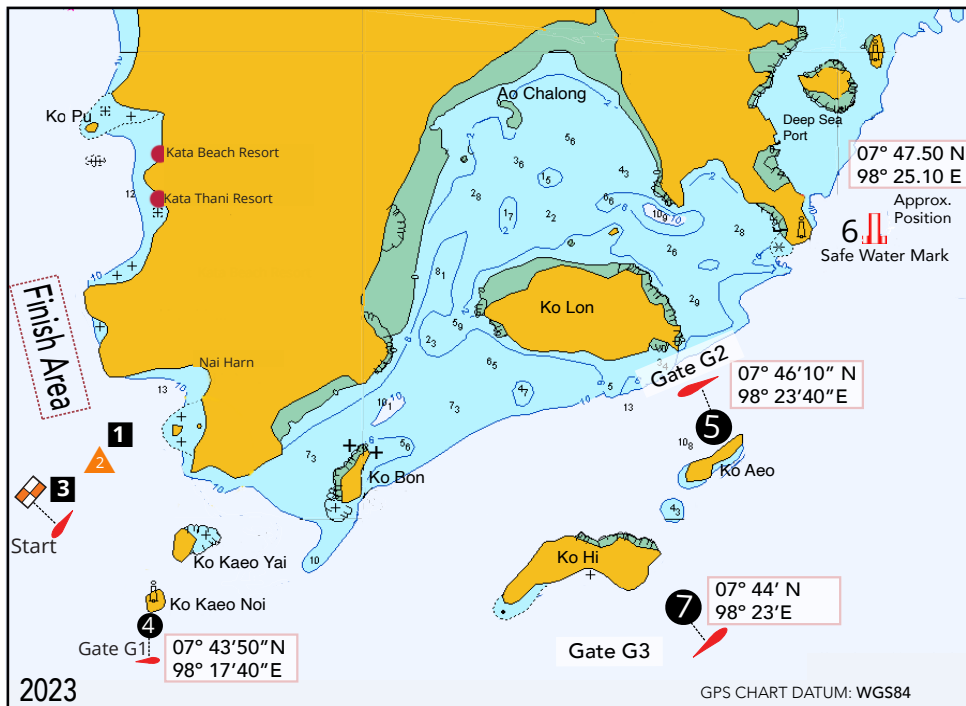


Course 3 (Distance 23 Miles)

Start
 Mark 3 (Yellow) to Starboard
 Through Gate G1 (Committee Boat to Starboard)
 Pass Ko Hi to Starboard
 Through Gate G2 (Committee Boat to Port)
 Round Ko Aeo to Starboard
 Through Gate G3 (Committee Boat to Port)
 Pass Ko Hi to Starboard
 Through Gate G1 (Committee Boat to Port)
 Finish (Approximate bearing 340 Degrees)

Course 4 (Distance 26 Miles)

Start
 Mark 3 (Yellow) to Starboard
 Through Gate G1 (Committee Boat to Starboard)
 Pass Ko Hi to Starboard
 Through Gate G2 (Committee Boat to Port)
 Round Safe Water Mark (6) to Starboard
 Pass Ko Aeo to Starboard
 Through Gate G3 (Committee Boat to Port)
 Pass Ko Hi to Starboard
 Through Gate G1 (Committee Boat to Port)
 Finish (Approximate bearing 340 Degrees)



Course 5 (Distance 22 Miles)

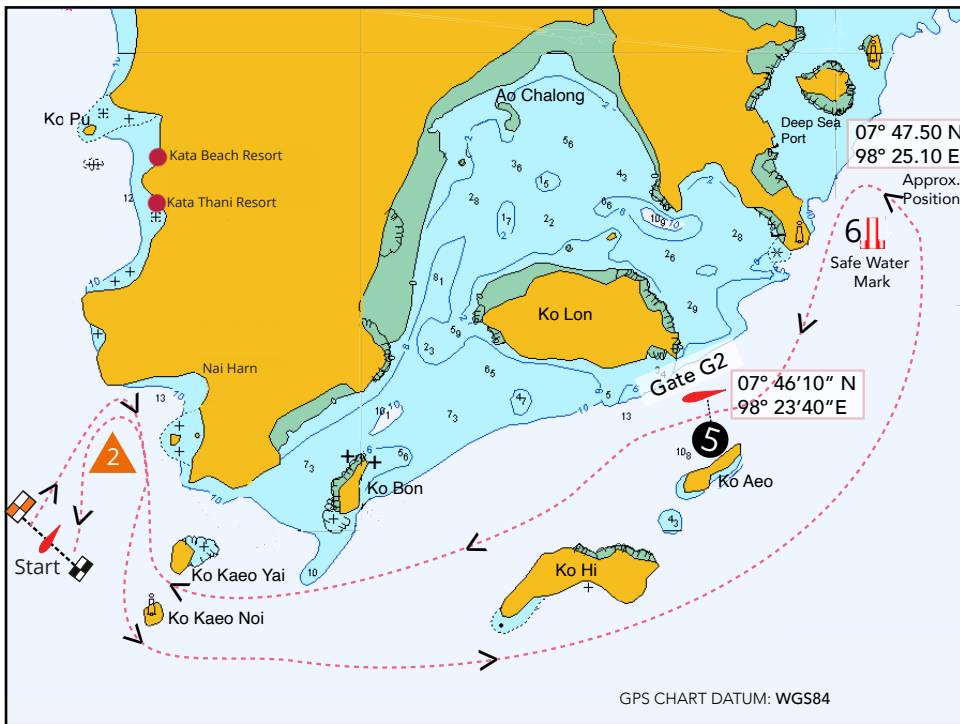
Start
 Mark 3 (Yellow) to Starboard
 Through Gate G1 (Committee Boat to Starboard)
 Round Ko Bon to Starboard
 Through Gate G2 (Committee Boat to Port)
 Round Ko Aeo to Starboard
 Through Gate G3 (Committee Boat to Port)
 Through Gate G1 (Committee Boat to Port)
 Finish (Approximate bearing 340 Degrees)

Course 6 (Distance 19 Miles)

Start
 Mark 3 (Yellow) to Starboard
 Through Gate G1 (Committee Boat to Starboard)
 Round Ko Bon to Starboard
 Round Ko Hi to Starboard
 Through Gate G3 (Committee Boat to Port)
 Through Gate G1 (Committee Boat to Port)
 Finish (Approximate bearing 340 Degrees)

Course 7 (Distance 12 Miles)

Start
 Mark 3 (Yellow) to Starboard
 Through Gate G1 (Committee Boat to Starboard)
 Round Ko Bon to Starboard
 Through Ko Kaeo Noi and Ko Kaeo Yai
 Finish (Approximate bearing 330 Degrees)



Course 8 (Distance 27 Miles)

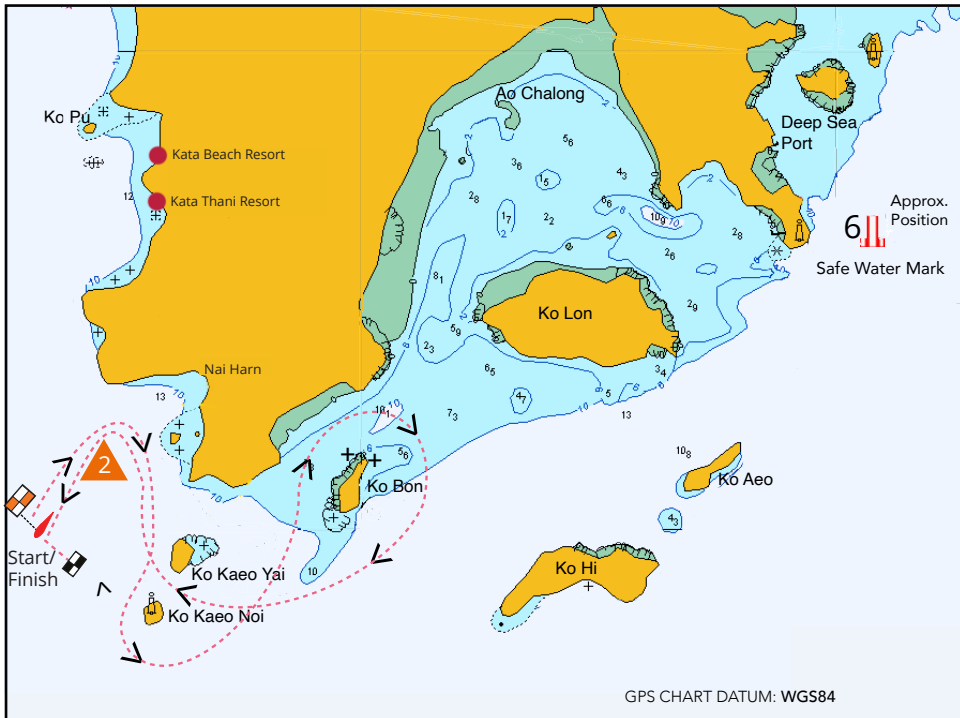
- Start
 Mark 2 to Starboard
 Round Ko Kaeo Noi to Port
 Pass Ko Hi to Port
 Pass Ko Aeo to Port
 Round Safe Water Mark to Port
 Through Gate G2 (Committee Boat to Starboard)
 Pass Ko Aeo to Port, Pass Ko Hi to Port
 Pass Between Ko Kaeo Noi and Ko Kaeo Yai
 Round Mark 2 to Port
 Finish.

Course 9 (Distance 8 Miles)

- (Not Illustrated)
 Start
 Mark 2 to Starboard
 Round Ko Kaeo Noi to Port
 Pass Between Ko Kaeo Noi and Ko Kaeo Yai
 Round Mark 2 to Port
 Finish.

GPS CHART DATUM: WGS84

2024



Course 10 (Distance 14 Miles)

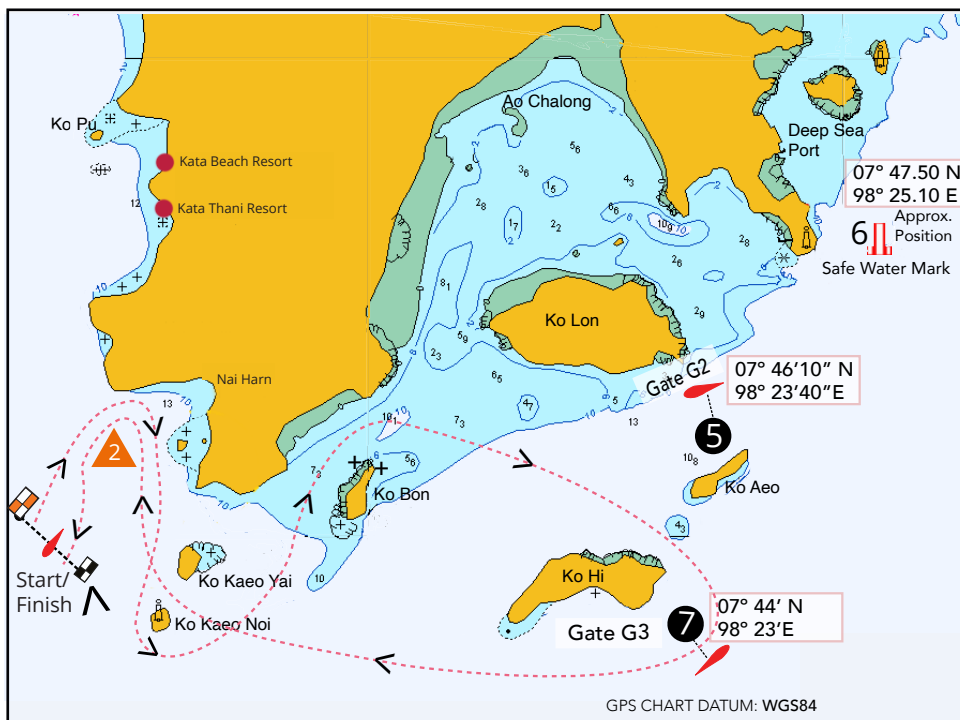
- (Illustrated)
 Start
 Mark 2 to Starboard
 Round Ko Kaeo Noi to Port
 Round Ko Bon to Starboard
 Pass Between Ko Kaeo Yai and Ko Kaeo Noi
 Round Mark 2 to Port
 Finish

Course 11 (Distance 14 Miles)

- (Not Illustrated)
 Mark 2 to Starboard
 Round Ko Kaeo Noi to Port
 Round Ko Bon to Port
 Pass Between Ko Kaeo Yai and Ko Kaeo Noi
 Round Mark 2 to Port
 Finish

GPS CHART DATUM: WGS84

2024

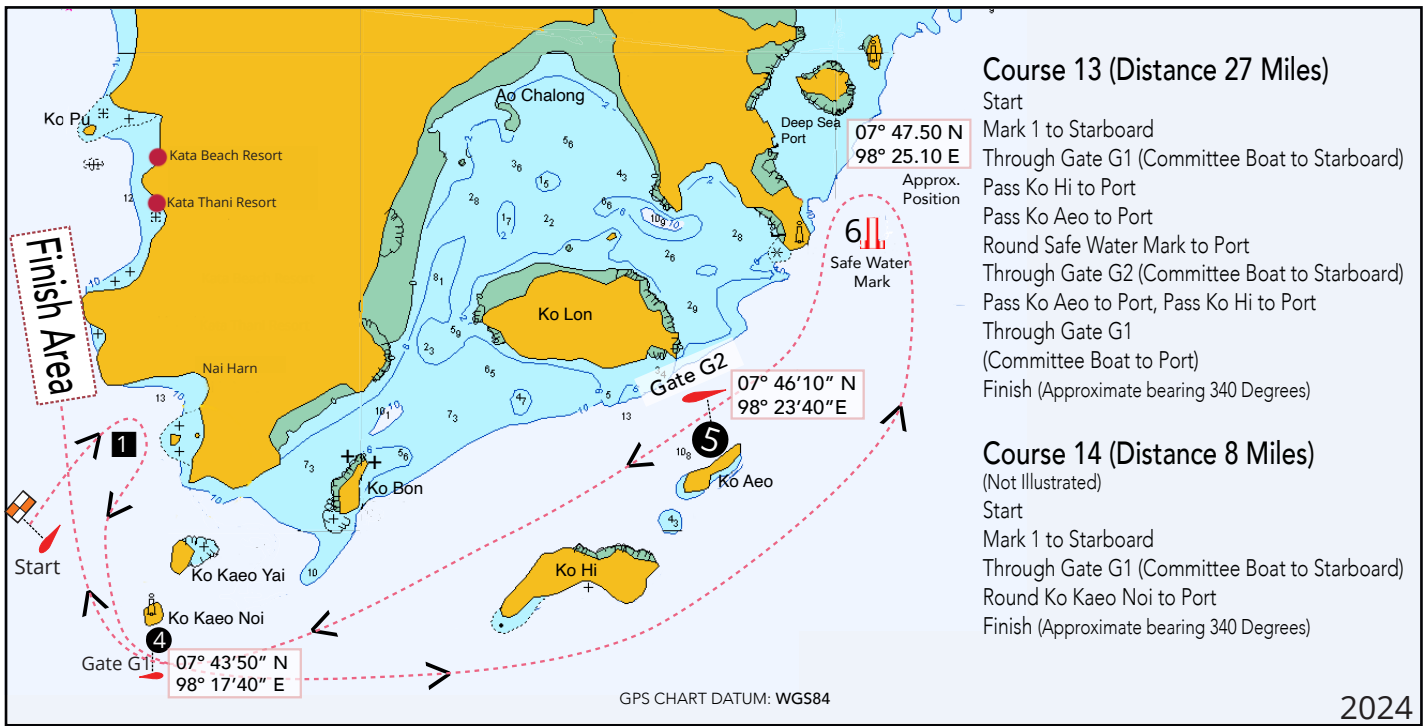


Course 12 (Distance 18 Miles)

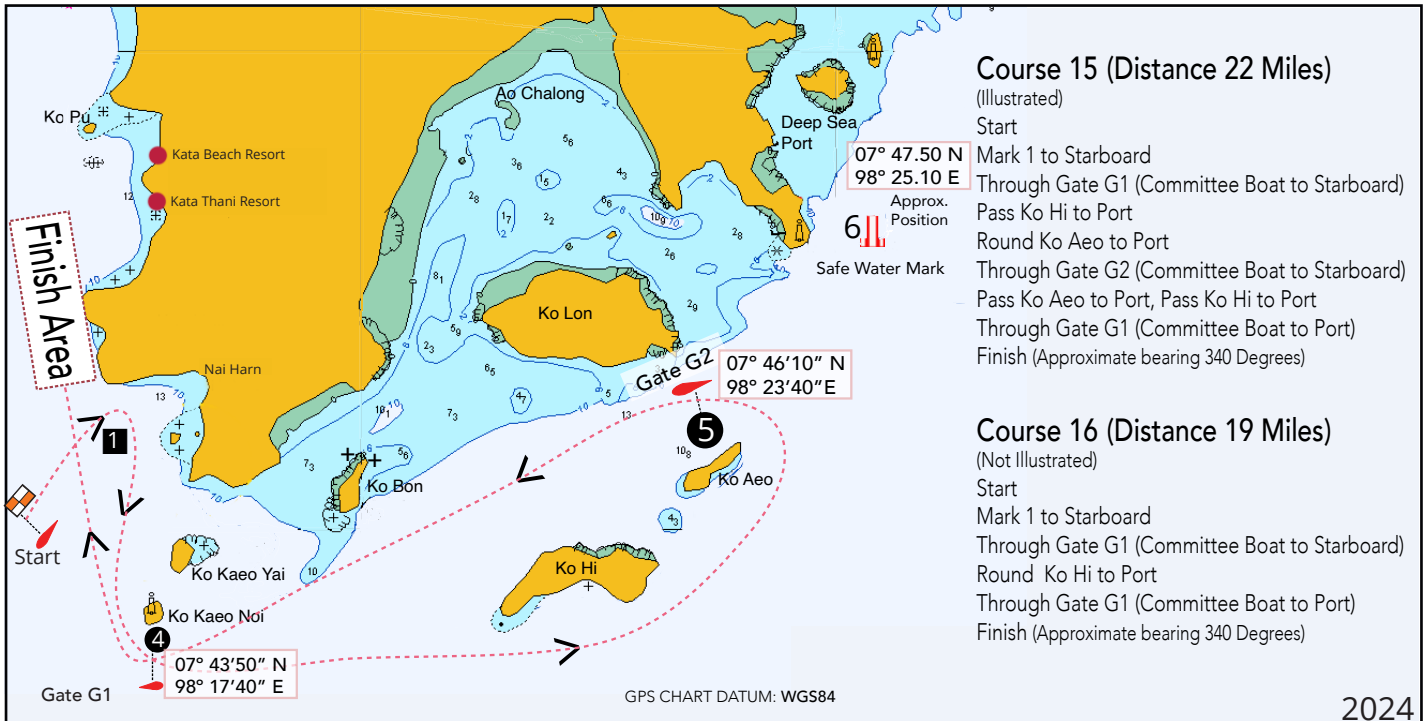
- (Illustrated)
 Start
 Mark 2 to Starboard
 Round Ko Kaeo Noi to Port
 Round Ko Bon to Starboard
 Round Ko Hi to Starboard
 Pass Between Ko Kaeo Yai and Ko Kaeo Noi
 Round Mark 2 to Port
 Finish

GPS CHART DATUM: WGS84

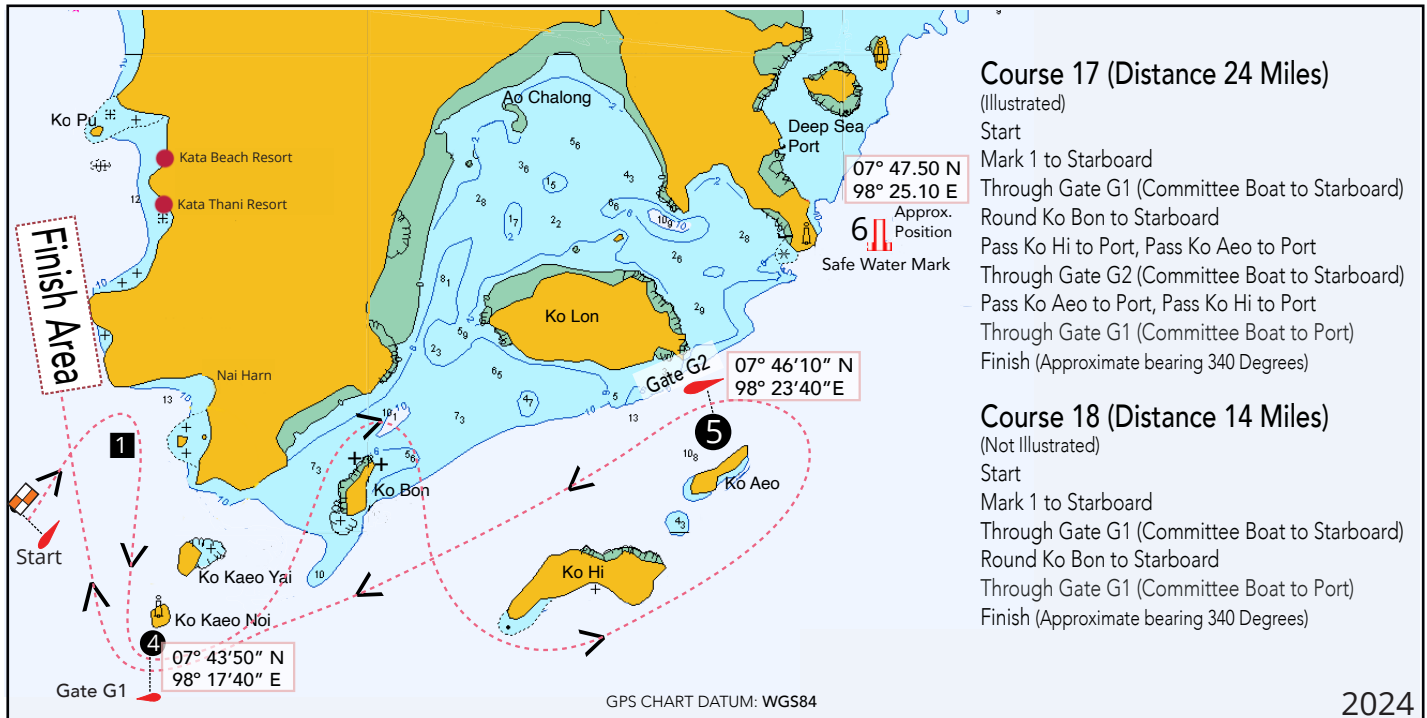
2024



2024



2024



2024



Distance to Mark 1
Approx 5 NM

Courses 19 -20 (Coastal)

All marks rounded to port

- 19. Start - 1 - 6 - Finish (12 Miles)
- 20. Start - 1 - 6 - 1 - 6 - Finish (16 Miles)



The race committee will endeavor to lay Mark 6 approximately 2 miles downwind from Mark 1

2024



Courses 21 - 24 (Windward/Leeward and Geometric)

All marks rounded to port

- 21. Start - 1 - 4 - 3 - 1 - Finish
- 22. Start - 1 - 3 - 1 - 4 - 3 - 1 - Finish
- 23. Start - 2 - 4 - Finish
- 24. Start - 2 - 4 - 3 - 2 - Finish



WIND



If the letter G is displayed with any course description this will denote that a gate 3s, 3p will replace Mark 3.



The race committee will endeavor to lay Mark 4 at 60° from the Windward Mark

2024



Courses 25 - 30 (Windward/Leeward)

All marks rounded to port

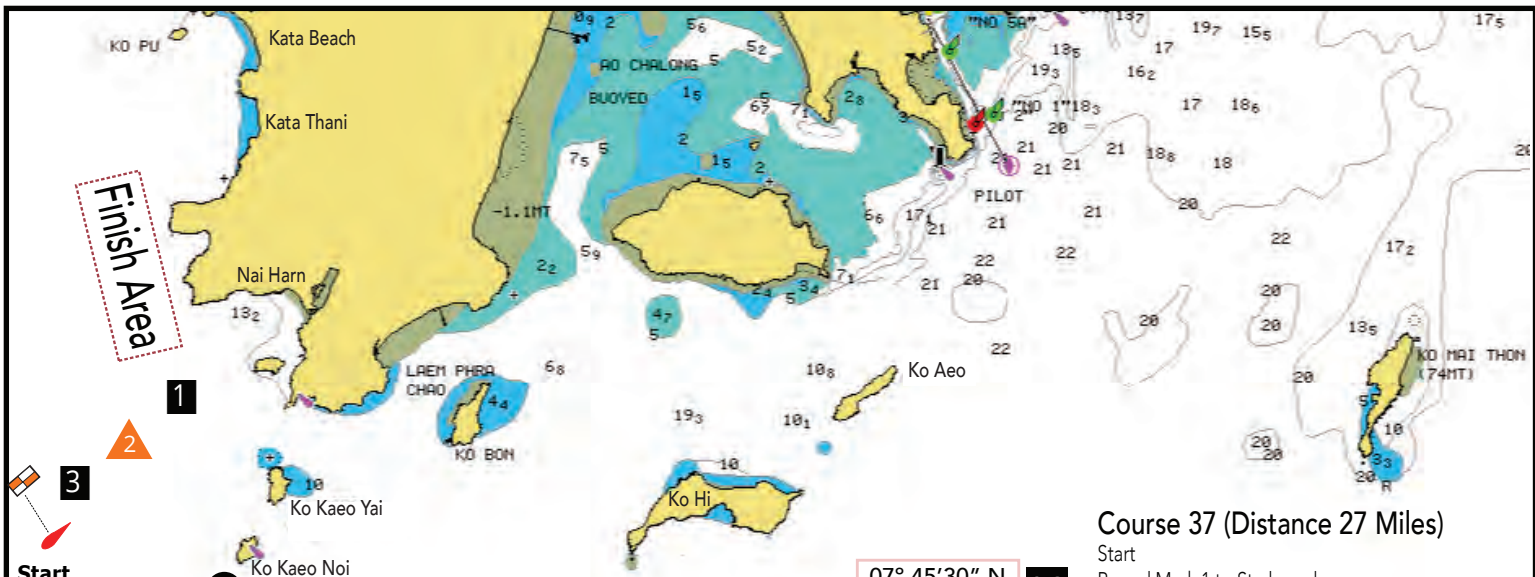
- 25. Start - 1 - 3 - 1 - Finish
- 26. Start - 1 - 3 - 1 - 3 - 1 - Finish
- 27. Start - 1 - 1s - 3 - 1 - 1s - Finish
- 28. Start - 1 - 1s - 3 - 1 - 1s - 3 - 1 - 1s - Finish
- 29. Start - 2 - 3 - 2 - Finish
- 30. Start - 2 - 3 - 2 - 5 - 2 - Finish



If the letter G is displayed with any course description this will denote that a gate 3s, 3p will replace Mark 3.



2024



The Andaman Sea Race Courses (31 - 43)

GPS CHART DATUM: WGS84

Course 31 (Distance 28 Miles)

Start
 Round Mark 1 to Starboard
 Through Gate G1 (Committee Boat to Starboard)
 Through Gate G4 (Committee Boat to Starboard)
 Round Mark 9 to Port
 Through Gate G1 (Committee Boat to Port)
 Finish

Course 32 (Distance 32 Miles)

Round Mark 1 to Starboard
 Through Gate G4 (Committee Boat to Starboard)
 and Round Gate Buoy 8 to Port
 Round Ko Hi to Port
 Through Gate G1 (Committee Boat to Port)
 Finish

Course 33 (Distance 25 Miles)

Start
 Round Mark 2 to Starboard
 Through Gate G4 (C.Boat to Starboard)
 and Round Gate Buoy 8 to Port
 Through Gate G1 (C.Boat to Port)
 Finish

Course 34 (Distance 32 Miles)

Start
 Round Mark 1 to Starboard
 Through Gate G1 (C.Boat to Starboard)
 Through Gate G4 (C.Boat to Starboard)
 and Round Gate Buoy 8 to Port
 Round Ko Hi to Port
 Through Gate G1 (C.Boat to Port)
 Finish

Course 35 (Distance 34 Miles)

Start
 Round Mark 1 to Starboard
 Through Gate G4 (C.Boat to Starboard)
 and Round Gate Buoy 8 to Port
 Round Ko Aeo to Port
 Pass Ko Hi to Port
 Through Gate G1 (C.Boat to Port)
 Finish

Course 36 (Distance 34 Miles)

Start
 Round Mark 1 to Starboard
 Through Gate G1 (C.Boat to Starboard)
 Pass Ko Hi to Starboard
 Round Ko Aeo to Starboard
 Round Mark 10 to Starboard
 Through Gate G4 (C.Boat to Starboard)
 Through Gate G1 (C.Boat to Port)
 Finish

07° 45'30" N
 98° 26'30" E

10

Course 37 (Distance 27 Miles)

Start
 Round Mark 1 to Starboard
 Through Gate G1 (C.Boat to Starboard)
 Round Mark 9 to Starboard
 Through Gate G4 (C.Boat to Starboard)
 Through Gate G1 (C.Boat to Port)
 Finish

Course 38 (Distance 31 Miles)

Start
 Round Mark 1 to Starboard
 Through Gate G1 (Committee Boat to Starboard)
 Round Ko Hi to Starboard
 Round Mark 10 to Starboard
 Through Gate G4 (Committee Boat to Starboard)
 Through Gate G1 (Committee Boat to Port)
 Finish

07° 39'00" N
 98° 24'30" E

9

Course 39 (Distance 39 Miles)

Start
 Round Mark 1 to Starboard
 Through Gate G1 (Committee Boat to Starboard)
 Round Ko Mai Thon to Starboard
 Through Gate G4 (Committee Boat to Starboard)
 Through Gate G1 (Committee Boat to Port)
 Finish

Course 40 (Distance 25 Miles)

Start
 Round Mark 1 to Starboard
 Through Gate G1 (C.Boat to Starboard)
 Round Ko Hi to Starboard
 Round Mark 9 to Starboard
 Through Gate G1 (Committee Boat to Port)
 Finish

Course 41 (Distance 32 Miles)

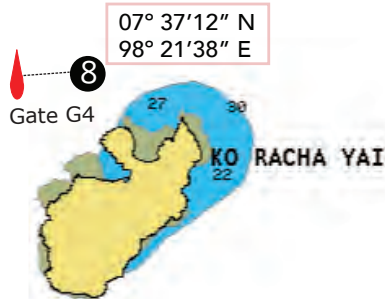
Start
 Round Mark 1 to Starboard
 Pass Ko Kao Noi to Port
 Round Ko Mai Thon to Port
 Pass between Ko Kao Noi and Ko Kao Yai
 Finish

Course 42 (Distance 32 Miles)

Start
 Round Mark 1 to Starboard
 Pass Ko Kao Noi to Port
 Round Ko Mai Thon to Starboard
 Pass between Ko Kao Noi and Ko Kao Yai
 Finish

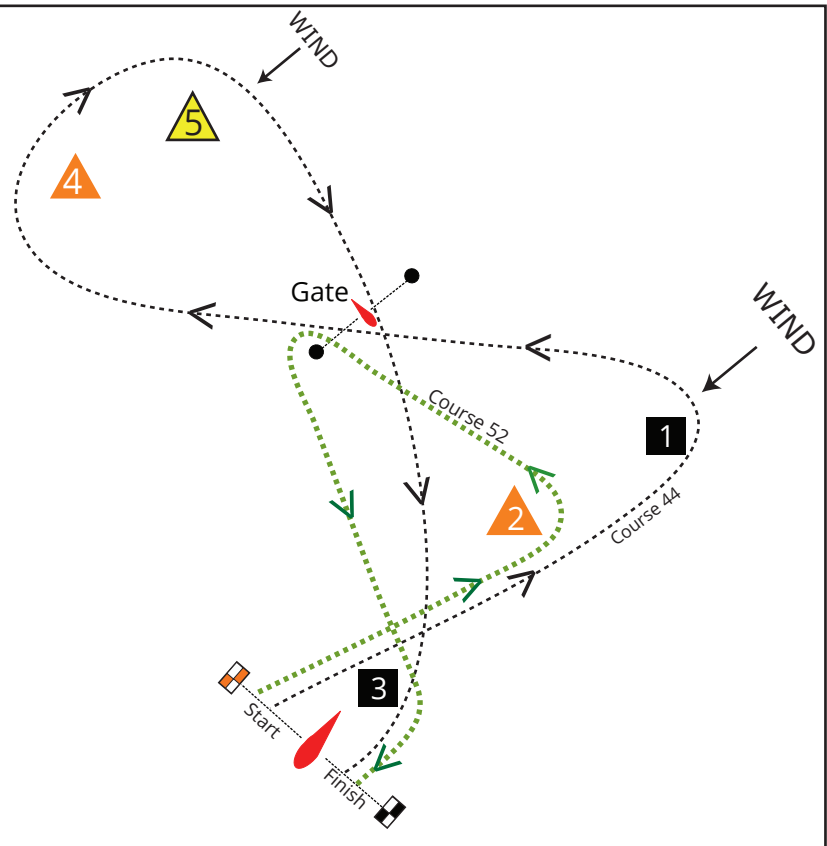
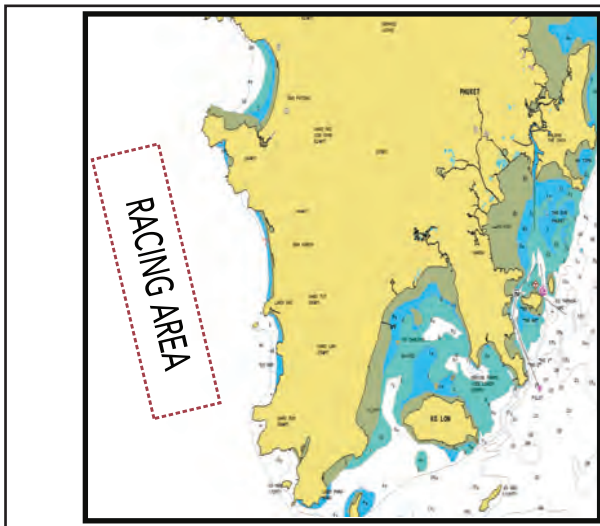
Course 43 (Distance 15 Miles)

Start
 Pass Ko Kao Noi to Port
 Round Ko Hi to Port
 Pass between Ko Kao Noi and Ko Kao Yai
 Round Mark 2 to Port - Finish (Not Illustrated)



07° 37'12" N
 98° 21'38" E

8



Courses 44 - 52 (Coastal)

Direction of Marks (all courses):

Pass through Gate with Committee Boat to Starboard
 Pass Marks as indicated (P to Port, S to Starboard)

- 44. Start - 1P - Gate - 4S - 5S - Gate - 3S - Finish
- 45. Start - 1P - Gate - 4S - 5S - 4S - 5S - Gate - 3S - Finish
- 46. Start - 2P - Gate - 4S - 5S - Gate - 3S - Finish
- 47. Start - 2P - 3P - 2P - Gate - 4S - 5S - Gate - 3S - Finish
- 48. Start - 1P - 3P - 1P - Gate - 4S - 5S - Gate - 3S - Finish
- 49. Start - 1P - 3P - 1P - Gate - 4S - Gate - 3S - Finish
- 50. Start - 2P - 3P - 2P - Gate - 4S - Gate - 3S - Finish
- 51. Start - 2P - Gate - 4S - Gate - 3S - Finish
- 52. Start - 2P - Through Gate and Round Port Gate Buoy - 3S - Finish

Course 44 and 52 are Illustrated as example only.

2024

**Phuket Tide Timetable - Ko Taphao Noi
 1st - 8th December, 2024**

DATE	HOUR HEIGHT OF WATER IN METERS								สูงของน้ำทำนายเป็นเมตรเหนือระดับน้ำลงต่ำที่สุด HEIGHTS OF WATER PREDICTED IN METERS ABOVE THE LOWEST LOW WATER															
	0	1	2	3	4	5	6	7	8	9	10	11	12	13	14	15	16	17	18	19	20	21	22	23
1 ●	28	23	17	13	10	10	13	17	22	26	28	28	26	22	18	14	11	11	14	19	24	29	3.2	3.2
2	30	26	20	15	11	09	11	15	20	24	27	28	27	24	20	16	12	11	12	16	21	26	3.1	3.3
3	32	29	24	18	13	10	10	12	17	22	26	28	28	26	23	18	14	12	11	14	18	23	2.8	3.2
4	33	31	27	21	16	12	10	11	14	19	23	27	28	27	25	21	17	13	12	13	16	20	2.5	3.0
5	32	32	29	25	19	14	11	11	13	16	20	24	27	27	26	23	20	16	14	13	15	1.8	2.2	2.7
6	30	31	30	27	23	18	14	12	12	14	17	21	24	26	26	25	22	19	16	14	14	1.6	2.0	2.3
7 ☽	27	29	30	29	25	21	17	14	12	13	15	18	21	24	26	26	24	22	20	17	16	1.6	1.8	2.0
8 ☾	24	26	28	28	27	24	21	17	14	13	14	16	18	21	24	25	26	25	23	20	18	1.7	1.7	1.8

Dates for your diary.....

- Royal Langkawi International Regatta
- Singapore Regatta
- The Bay Regatta (Phuket, PhangNga, Krabi)
- Samui Regatta (Ko Samui)

- 20th - 25th January 2025
- 15th - 16th February 2025
- 19th - 23rd February 2025
- 24th - 31st May 2025



2024 Phuket King's Cup Regatta

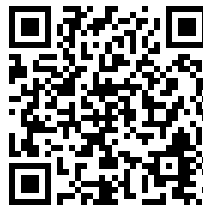
Links to Public Information

Regatta officials are using a web-based program to assist with the management of this regatta. It provides electronic forms for such actions as scoring inquiries, protests, equipment substitutions, etc. And it provides for electronic communication with competitors if competitors have provided an email and/or telephone number accepting SMS. Competitors will be notified electronically of protest time limits, confirmation of a protest filing, scheduled hearing times, etc. This electronic system allows competitors to move freely about the event and remain in contact with relevant officials. And all competitors have electronic access to the scoring inquiries, jury decisions, etc.*

Notice: The Official Notice Board (ONB) is still the only official source of information for this regatta.



Skippers WhatsApp Info Group



Submit a Request for Hearing



Submit a Scoring Enquiry

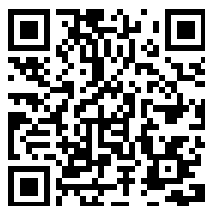
Notice: When submitting a protest, request or report, the procedure (as set forth in the Racing Rules of Sailing and the Sailing Instructions) remains unchanged



Online Notice Board



Hearing Schedule



Hearing Decisions



Scoring Inquiries

The jury and parties reserve the right to limit public access to certain decisions.